

216E

Industrial Vacuum Cleaner

Improved Working Air Quality

Introducing the 216 E model industrial vacuum cleaner, designed to meet the demanding needs of the composite handling, building and construction, and chemical industries. Its electrically powered suction head provides high suction capacity, making it ideal for maintenance and light industrial applications.

This robust dry industrial vacuum cleaner is designed specifically for handling powder and other dry materials, excluding combustible dusts, ensuring a clean and safe working environment.

- **Advanced Filtration System:** Equipped with cyclonic primary stage pre-separation and an optional HEPA filter, it effectively captures fine dust particles, ensuring a healthier work environment.
- **Suction Capacity:** Delivers superior performance in dry material handling, making it an indispensable asset in industries requiring the removal of fine powders and dust.
- **Extended Filter Life:** The reverse air manual filter cleaning feature extends the filter's lifespan, minimizing maintenance requirements and ensuring consistent performance.
- **Portable and Maneuverable:** Designed for ease of transport and positioning within various industrial settings, its compact form factor and robust build enhance operational efficiency and convenience.



Applications

- Chips
- Granulates
- Dust
- Grit
- Fumes

General Features

Introducing a versatile and efficient portable industrial vacuum cleaner solution designed for diverse industrial needs, featuring:

- Suitable for continuous operation with the carbon brush suction head technology.
- Its design incorporates a cyclone effect, enhancing efficiency in handling larger particle sizes.
- Three stage filtration ensures thorough separation and collection of dust and debris.
- Option for secondary HEPA filter cartridge, providing flexibility to meet various filtration requirements.
- Features a manual reverse ambient filter cleaning system,
- Built with a robust frame to withstand demanding industrial environments.
- Includes floor cleaning tools with Ø 2 in. 24.6 ft. (7,5 m.) hose.

General Specifications

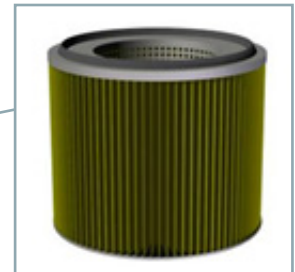
Model	Suction Type	Main Filter Type	Filter Cleaning	Power	Max Airflow	Max Pressure	Input Power
				HP (kW)	CFM (m³/h)	inWG (kPa)	
216E	Electrical - NEL3	Cartridge	Manual - Reverse air pulse	3.2 (2.4)	270 (460)	80 (20)	110V / 1PH / 50-60 Hz

Model	Dustbin Volume	Weight	Inlet Diameter
	gal. (lt.)	lb. (kg)	in. (mm)
216E	12 (47)	152 (69)	2 (50)

Accessories



HEPA Filter



Main Cellulose Cartridge Filter



Extraction Nozzles